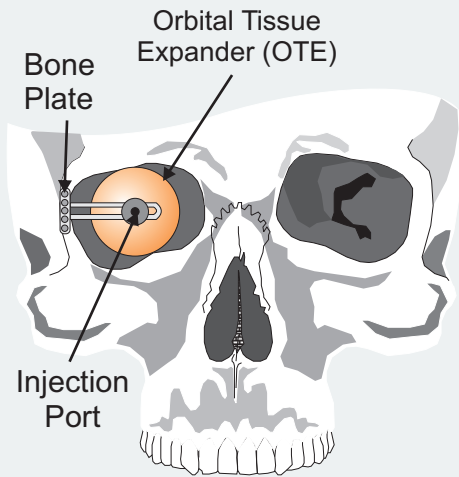
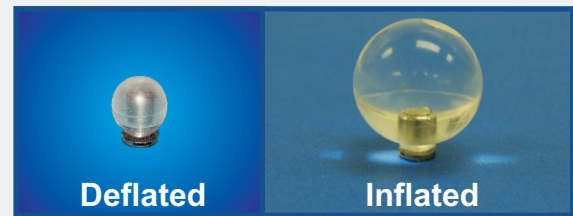


# Orbital Tissue Expander (OTE)

For the treatment of infants with a missing eye (Anophthalmia)  
or with a non-functioning eye (Microphthalmia)

## Benefits of Using the OTE

- Enables an infant's affected ocular orbit to grow with the orbit of the healthy eye to prevent permanent facial disfigurement.
- Simple inflation and deflation eliminates the need for successive surgeries and the implantation of larger devices.
- Easily inflated, deflated, removed, or replaced with no harm to the infant.
- Bone plate prevents extrusion and facilitates self-centering of the device in the ocular orbit.
- Cost-effective and requires little follow up.



## Technical Attributes

- Inflatable silicone expander held in place by a titanium bone plate anchored to the lateral orbital wall by screws.
- Slotted arm attached to the bone plate provides multiple fixation areas allowing for fixation change and for the OTE to self-center as the orbit enlarges.
- Expander is inflated with saline through a self-sealing injection port via a 30gauge needle attached to a disposable syringe.
- Maximum inflation of 5cc, equivalent to an anterior-posterior diameter of 24mm and a 22mm equatorial diameter.
- 3 different bone plate sizes offered for a secure fit in most patients.

Developed and Manufactured by Innovia LLC

Tested by the Ophthalmic Biophysics Center  
Bascom Palmer Eye Institute  
University of Miami, Miller School of Medicine

US Patent 6,582,465 (David Tse, MD)

Tse D, Pinchuk L, Falcone S, Lee W, Acosta AC, Hernandez E, Lee E, Parel JM. *Evaluation of an Integrated Orbital Tissue Expander in an Anophthalmic Feline Model.* Am J Ophthalmol 2007; 143:317-327.

US Sales: FCI Ophthalmics | All Other Sales: Innovia LLC



FCI Ophthalmics  
Tel: (800) 932-4202  
Fax: (781) 826-9062  
Email: [info@fci-ophthalmics.com](mailto:info@fci-ophthalmics.com)  
Web: [www.fci-ophthalmics.com](http://www.fci-ophthalmics.com)



Innovia LLC  
Tel: (305) 378-2651  
Fax: (305) 378-2652  
Email: [innovia@innovia-llc.com](mailto:innovia@innovia-llc.com)  
Web: [www.innovia-llc.com](http://www.innovia-llc.com)  
[www.orbitalexpander.com](http://www.orbitalexpander.com)  
DWG-OTE-0094-00R02